

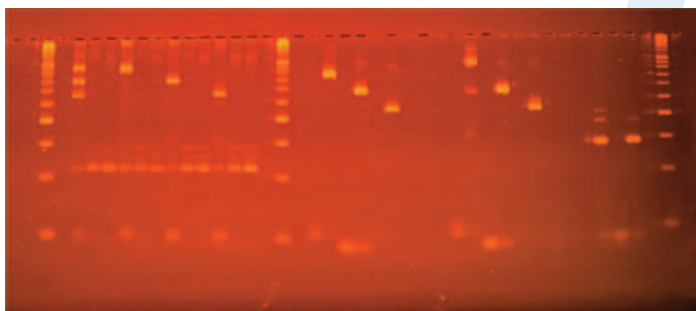
hPAGE



Developed in collaboration with the Kirkhouse Trust, this system is used for horizontal polyacrylamide gel electrophoresis. Whilst vertical systems are commonly used for polyacrylamide gel electrophoresis, this unit's horizontal format allows for a large number of samples to be run simultaneously and combines this with the greater resolution of polyacrylamide compared with agarose. The model is based on the published work of Izzo et al (2006). The main advantage of the system is that it is very simple to pour and cast the gels which takes away some of the complexity normally associated with vertical gel casting. loading 0.2mm wedge-spacer gels.

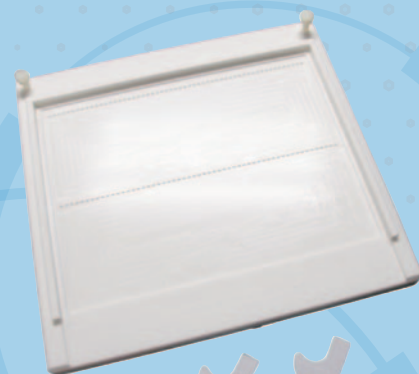
TECHNICAL SPECIFICATIONS

UNIT DIMENSIONS (CM)	29 x 31 x 3
GEL DIMENSIONS	21 x 27 cm, 21 x 13.5 cm, 13.5 x 12.5 cm
MAX SAMPLE CAPACITY	112



horizontal
polyacrylamide
gel
electrophoresis

- EASY TO CAST
- NO LEAKING
- VARIOUS PLATE SIZES



ORDERING INFORMATION

MS26-HPAGE2	hPAGE Horizontal PAGE System with electrophoresis tank and double tooth row casting system
HPAGE-PLAT1	hPAGE casting unit, 2 rows teeth (No Glass Plates)
HPAGE-PLAT2	hPAGE casting unit, 1 row of teeth (No Glass Plates)

CLEAVER SCIENTIFIC LTD

Unit 41, Somers Road Industrial Estate,
Rugby, CV22 7DH
United Kingdom

T_ +44 (0)1788 565300
E_ INFO@CLEAVERSCIENTIFIC.COM
W_ WWW.CLEAVERSCIENTIFIC.COM