

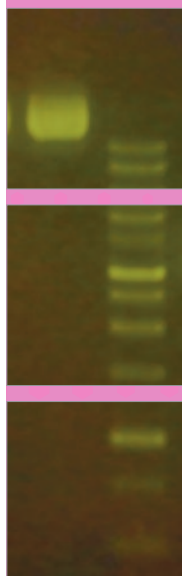


runSAFE

general purpose stain for DNA ranging
from 50bp to large supercoiled plasmid



runSAFE Range
comprises four
non-mutagenic
stain and loading
dye combinations
to visualize
electrophoretic
mobility of a wide
range of DNA in
agarose gels.



WWW.CLEAVERSCIENTIFIC.COM

- **Safe** – all four runSAFE stains have ultra-low toxicity (LC₅₀>5000mg/kg) and lack cell permeability
- **Convenient** – each stain is supplied as a ready to use 6x Loading dye; simply add 1 part stain to 5 parts DNA, your gel mix and load your gel
- **Fast** – no time-consuming post-staining or de-staining of gels is required
- **Sensitive** – very low background staining of the gel; detects as little as 0.2ng DNA per band
- **Flexible** – each stain may be used with Blue or UV light
- **runVIEW™ compatible** – all four stains are perfect for use with the runVIEW™ real-time horizontal gel electrophoresis system supplied with bluVIEW amber filter lid.

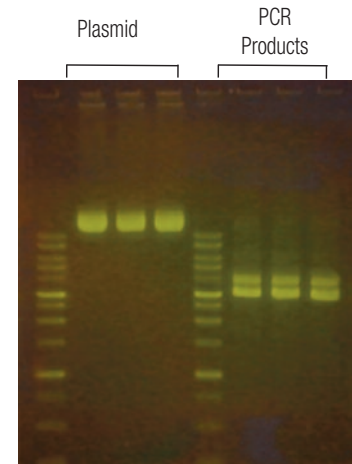
The runSAFE range comprises four stain and loading dye combinations to visualize electrophoretic mobility of a wide range of DNA in agarose gels

runSAFE is conveniently supplied in a 6x loading dye which is mixed with 5 parts double-stranded DNA before loading onto an agarose gel. runSAFE is non-toxic, safe for the environment and can be disposed of in the regular laboratory waste without using expensive decontamination methods. runSAFE is sensitive and binds DNA to detect as little as 0.2ng DNA per band within a gel; while gel imaging is best performed using the amber emission filter found on the bluVIEW lid or runDOC filter slide. The runSAFE Range is comprised as follows:

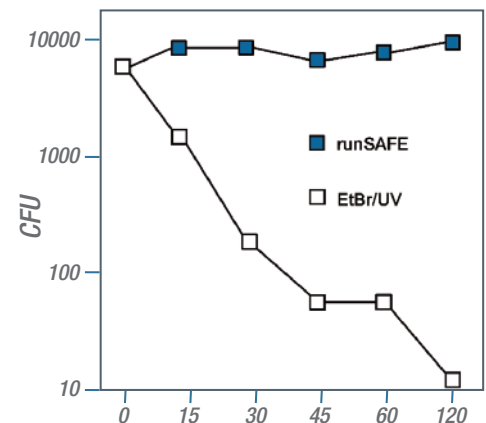
- runSAFE – general purpose stain for DNA ranging from 50bp markers to large super-coiled plasmid
- runSAFE-PLUS500 – for DNA larger than 500bp in size
- runSAFE-2000 – for DNA vectors and inserts ranging from 500-2000bp
- runSAFE-500 – for small DNA fragments, PCR products, sequence tracts and primers less than 500bp

runSAFE -

less DNA damage,
improved cloning efficiency



Blue LED System



Slower migrating species, indicative of a linear or relaxed circular vector, resulting from DNA nicking or strand breaks, are significantly reduced in DNA plasmid mixed with run-SAFE and exposed to blue light. The concentration of nicked DNA plasmid increases significantly after 8' of exposure to EtBR and UV irradiation.

ORDERING INFORMATION

runSAFE	Description	Tracking Dyes	Size Range
RUNSAFE	runSAFE stain, 1ml	Bromophenol Blue, Xylene Cyanol FF, Orange G	50bp – 20Kb
RUNSAFE- PLUS500	runSAFE-PLUS500 stain, 1ml	Bromophenol Blue, Xylene Cyanol Blue	>500bp
RUNSAFE- 2000	runSAFE- 2000, 1ml	Xylene Cyanol Blue, Orange G	500-2000bp
RUNSAFE- 500	runSAFE-500, 1ml	Orange G	<500bp

CLEAVER SCIENTIFIC LTD

Unit 41, Somers Road Industrial Estate,
Rugby, CV22 7DH
United Kingdom

T_ +44 (0)1788 565300
E_ INFO@CLEAVERSCIENTIFIC.COM
W_ WWW.CLEAVERSCIENTIFIC.COM