

FMS2 / compact multi shaker

- 200X200mm platform for efficient incubator operation

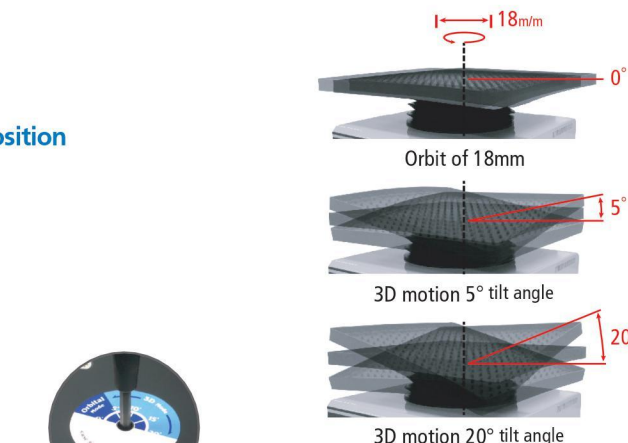
FMS3 / Extremely quiet operation with various movement position

- High quality DC brushless motor for gentle and powerful motion
- Installed 300X300mm platform
- Continuous or timed operation

Common facts

- BAE MECHANISM (patented, 5 step angle adjustment system) allows orbital motion and various twist movement
- Orbit of 18mm for best mixing result especially for gel and blotting
- Dual mat to accommodate each vessel
- Simple and easy of angle adjustment

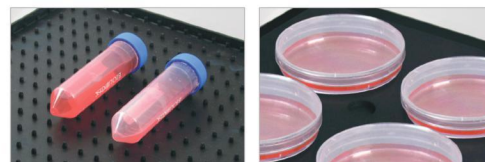
- An examples to use
- Western blotting
 - Gel staining
 - Immunoprecipitation
 - Bacteria / Yest culture



► FMS3



► FMS2



Specification

| Model | FMS2 | FMS3 |
|-----------------|----------------------------|------------------------------|
| Speed range | 5 ~ 90 rpm | 30 ~ 300 rpm |
| Shaking Angle | orbital range-18mm | |
| | 3D twist 5° | |
| | 3D twist 10° | |
| | 3D twist 15° | |
| | 3D twist 20° | |
| Motor | DC Warm Geard Motor | BLDC Motor |
| Temp. Resist | Lower than 65°C(Hum 90%) | Lower than 55°C(Dry air 85%) |
| Loadable weight | 1Kg | 3Kg |
| Timer (speed) | - | 180min |
| Weight | 3Kg | 12Kg |
| Dimensions (mm) | W200xD280xH147 | W300xD300xH155 |
| Platform (mm) | W200xD200 | W300xD300 |
| Wattage | 35W | 50W |
| Power | Free Voltage (AC 100-240V) | |
| Frequency | 50/60Hz | |

ACCESSORIES (FMS3)



50ml holder/CP50

100ml holder/CP100

250ml holder/CP250

50ml plate / FT302-50-13

100ml plate / FT302-100-13

250ml plate / FT302-250-8

PLATE / FT302

SR300

Accessories (FMS3)

| Model Number | Description |
|--------------|---|
| CP50 | 50ml flask holder |
| CP100 | 100ml flask holder |
| CP250 | 250ml flask holder |
| FT302 | Universal Table for flask holder |
| FT302-50-13 | Flask Table for 50ml flask-Capacity : 13ea |
| FT302-100-13 | Flask Table for 100ml flask-Capacity : 13ea |
| FT302-250-8 | Flask Table for 250ml flask-Capacity : 8ea |
| SR300 | Flexible silicon wire rack (W300xD300mm) |